

How to listen better

Roundtable | How can technology and participatory approaches strengthen each other?

28 April 2025



Edita Chavez-Heredia
Product Manager



Alice Gottesman
Technical Manager



Hannah Grice
Operations Manager



Agenda

- Introductions & context setting
- Participatory approach
- Success stories
- Problem exploration
- Solution exploration
- Closing



Introductions



What is LandScale?

A system for assessing and validating the maturity of landscape initiatives and holistic landscape sustainability.

What is the landscape approach?

A collaborative management strategy that brings together diverse stakeholders to advance shared sustainability goals and build resilience at the landscape scale.

Why this roundtable?

To exchange ideas and learn with others as we refine our processes and technology to enhance participation.



What's the first word that comes to mind when you hear 'participation in technology'?

16 responses

local knowledge
accessibility
capacity
community
fair
access
engaging users
equal access
capacity building
training
diversity
knowledge
expertise
engagement
equity

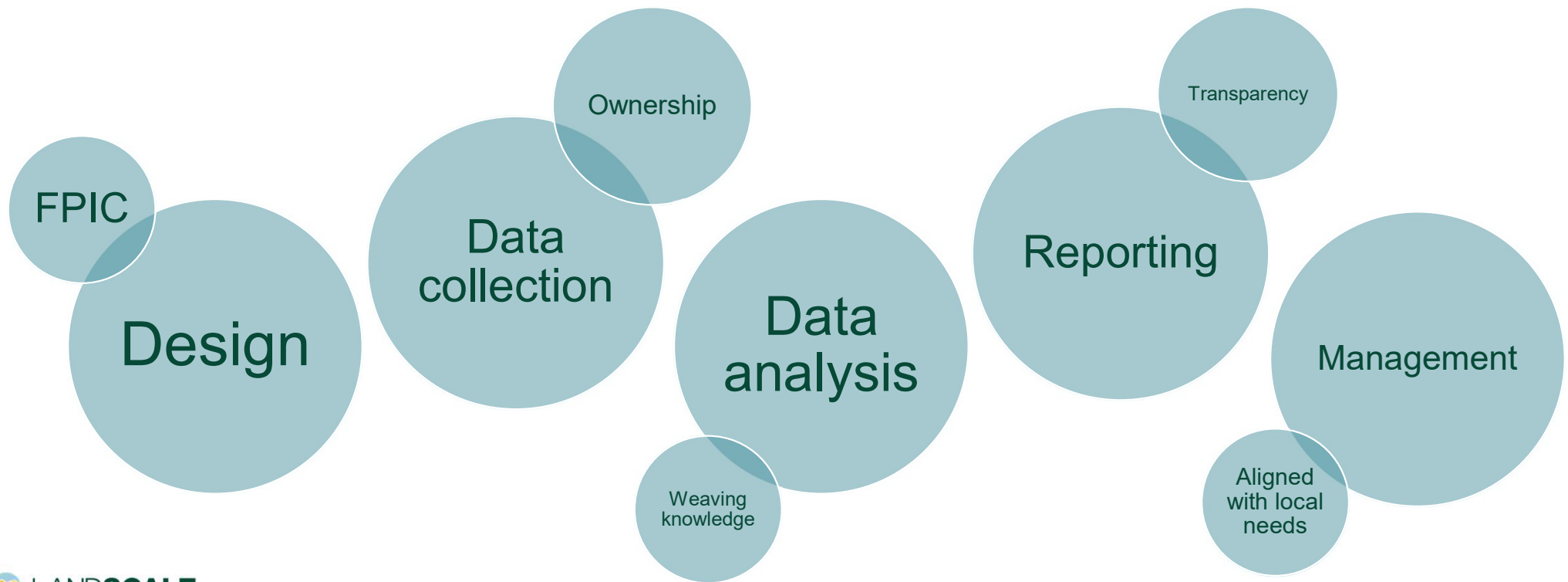


The participatory approach

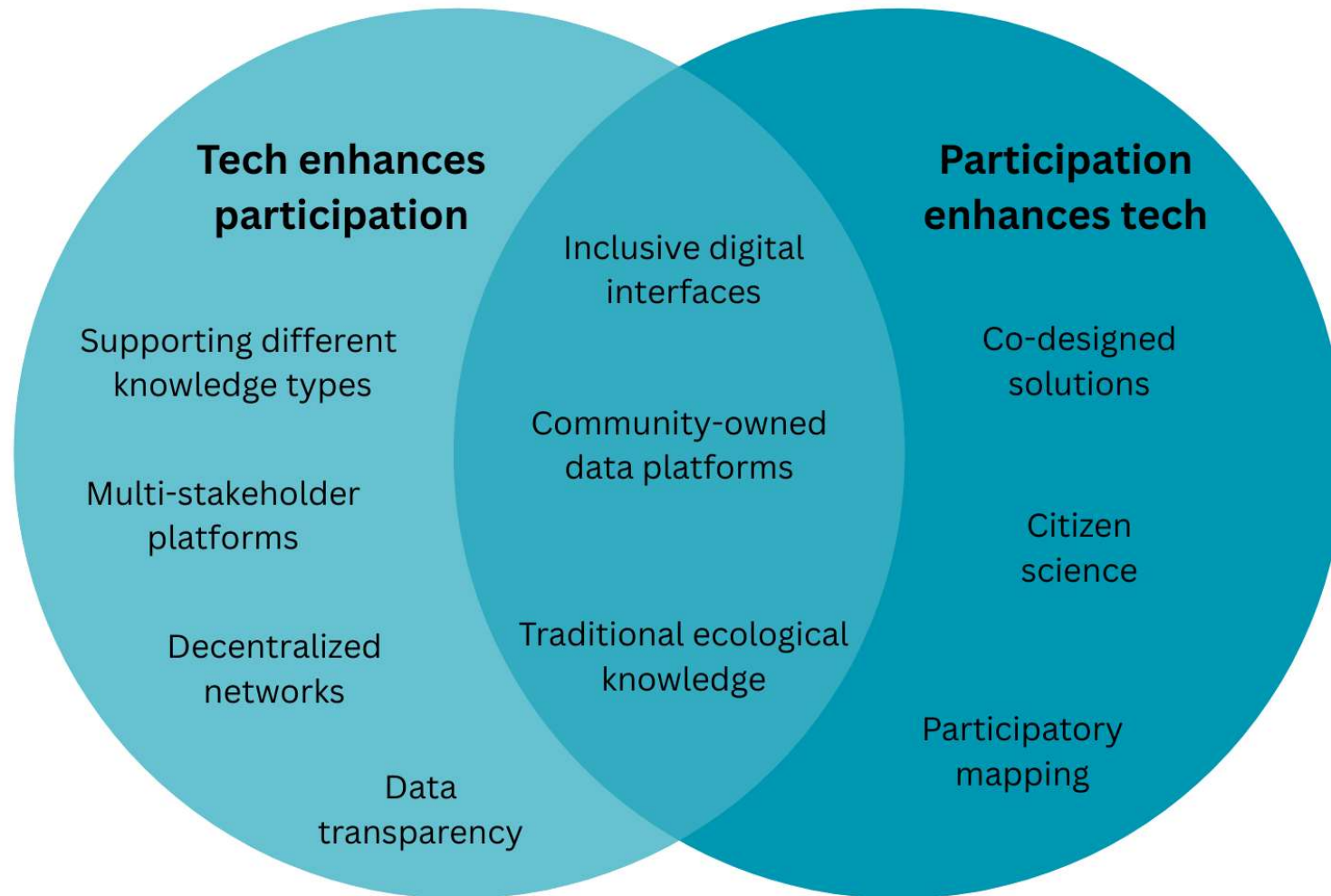


What is a participatory approach?

Engaging stakeholders—especially those directly impacted—in all stages of a process



Participatory approaches and tech



Risks

What are the risks of not taking a participatory approach to developing data & tech tools?

- Violation of laws, treaties and agreements
- Human rights violations
- Exclusion of IP&LC from benefits, decision-making and ownership
- Displacement
- Exploitation
- Greenwashing
- Developing unsustainable/ineffective solutions
- Low uptake



Success stories



LandScale: Facilitating community-led landscape monitoring in the Western Highlands of Cameroon (COBALAM)

Objective:

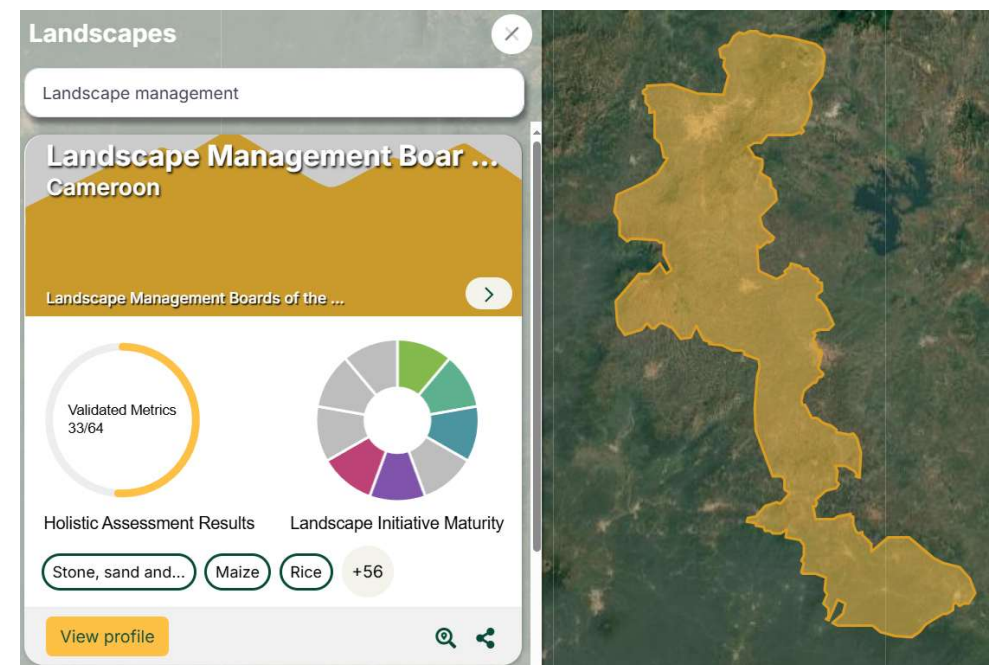
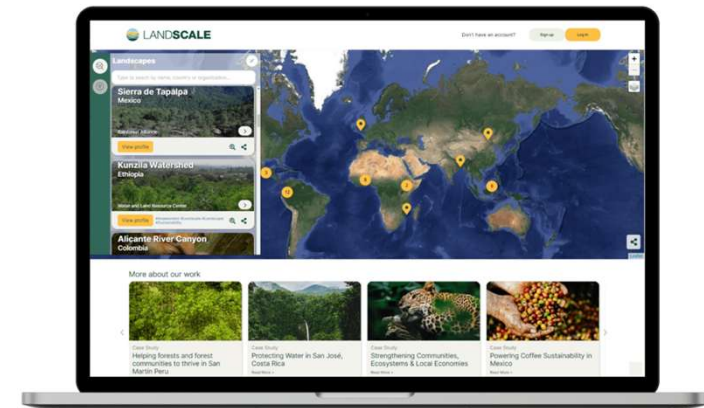
- Protect and conserve sacred forests
- Enhance local governance
- Improve local income

Key participatory elements:

- Monitoring and evaluation led by collaborative landscape management board (LMB)
- Output reviewed by local experts

Intended impact:

- Contribute to identification of Priority Development Zone (ZAP)



Jaguar ID Project in the Northern Pantanal

Objective:

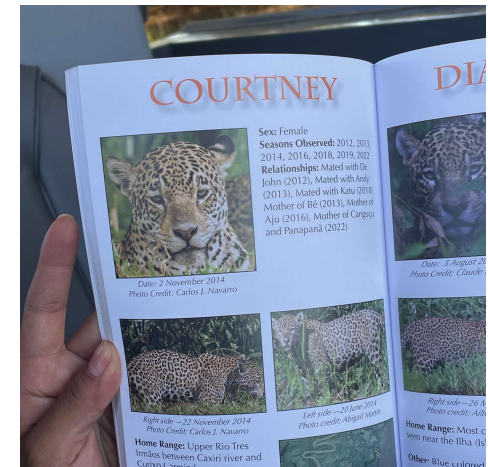
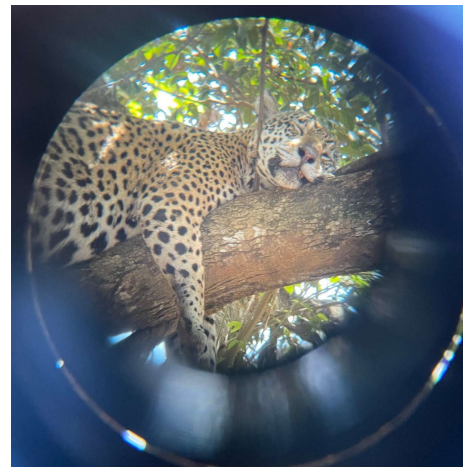
- Create a comprehensive database of individual jaguars in the Northern Pantanal using non-intrusive methods
- Foster a meaningful connection between humans and jaguars to support their conservation

Key participatory elements:

- Citizen science & community engagement
- Collaborative data collection

Impact:

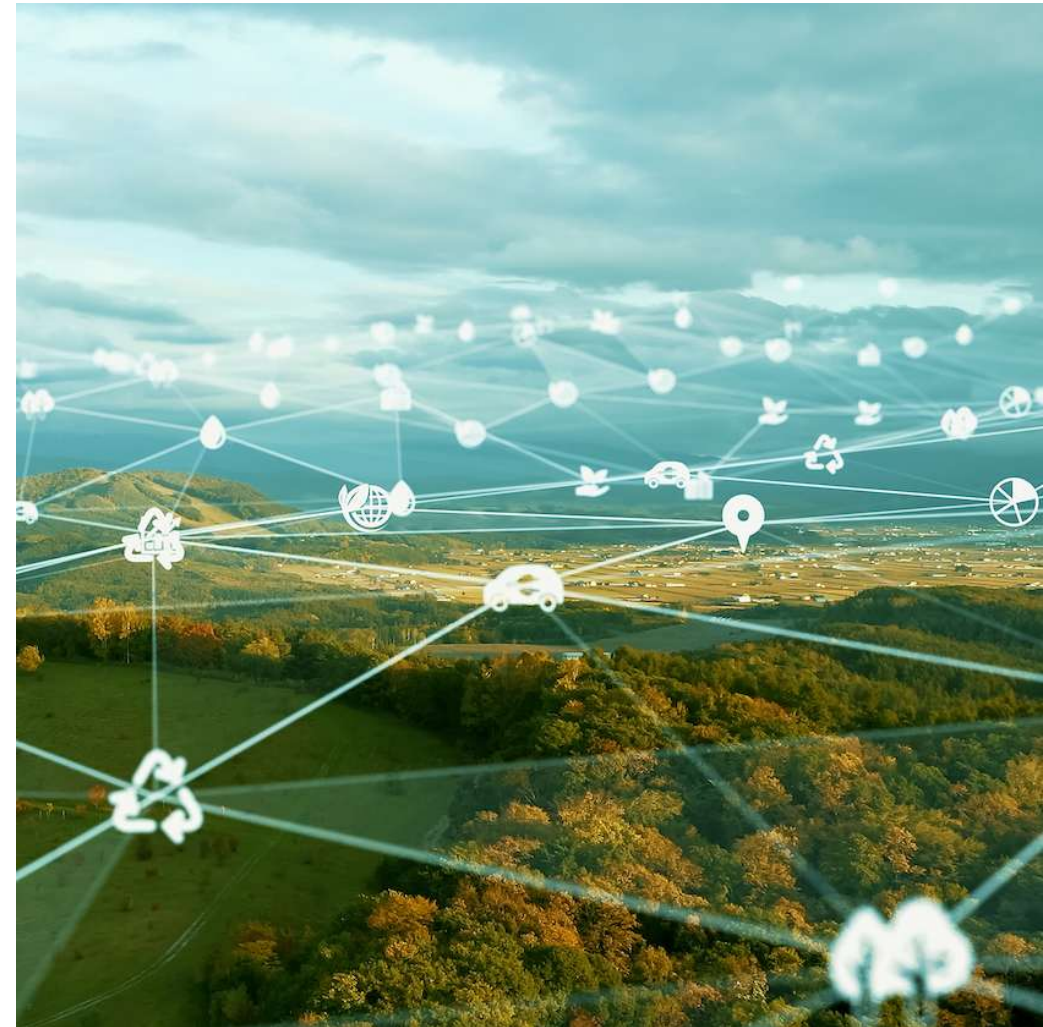
- Empowered stakeholders
- Enhanced conservation efforts
- Increased awareness



Building a decentralised ledger for forest data in Europe*

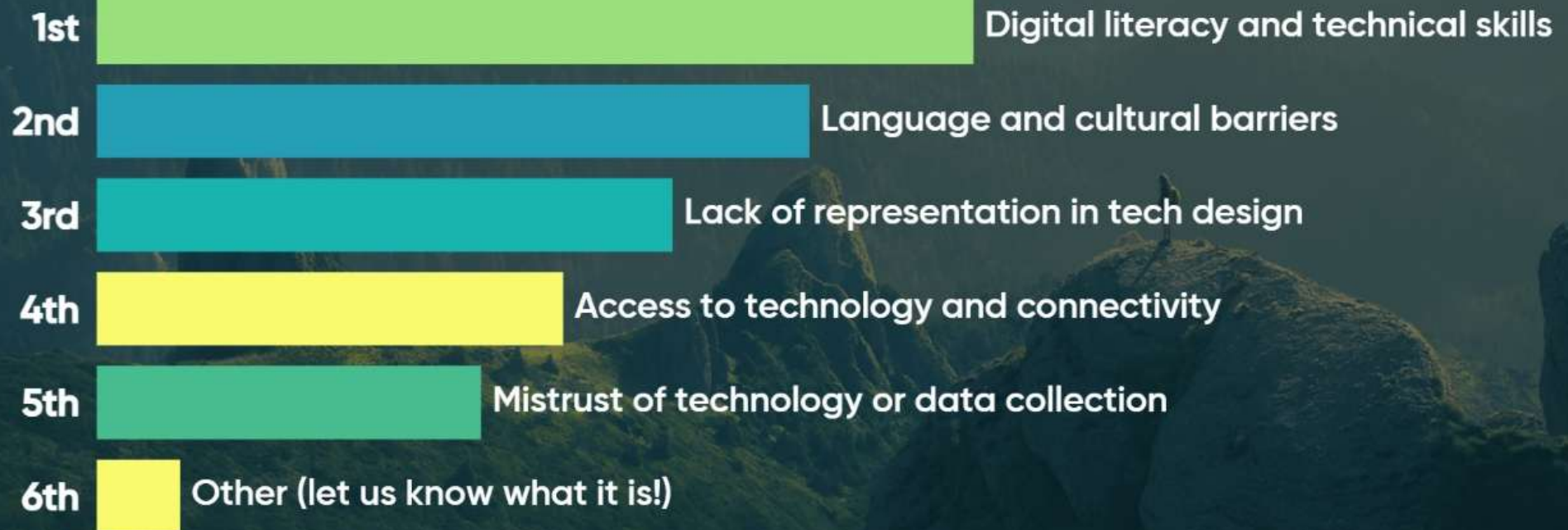
- **Objective:**
- Using blockchain to digitise Europe's forests will ensure efficiency, cost effectiveness, the ability to measure progress and national data privacy.
- **Key participatory elements:**
- Data collection led by a coalition of actors on the ground
- Data ownership remains with collectors/forest owners
- Tech ownership is also led by a coalition – requires many 'miners'
- **Impact:**
- Single market for forest data, high levels of trust
- (potentially) Open access allows everyone to trace impact
- Data ownership with the forest owners
- Increase investor access and stimulate cross-border investment

<https://www.weforum.org/stories/2021/03/blockchain-can-protect-our-trees-here-s-how/>



*disclaimer: still theoretical

What are the biggest barriers to using technology for inclusive and meaningful participation?





Have you seen or used a technology that successfully supported participation? If so, what was it?

6 responses

Merlin bird ID app

Earth Ranger

Inaturalist

eDNA collection - we did not include the community and the project suffered as a result

Camera traps with GPS trackers to support biodiversity monitoring

Xeno canto



Problem exploration

Who may you be unintentionally
excluding from your work? What
are potential implications of this?



Problem exploration

Who may you be unintentionally excluding from your work? What are potential implications of this?

- Whose voices are currently missing from your design, development or implementation processes?
- Power dynamic issues ?
- How does the demographic composition of your team potentially limit your understanding of user experiences?
- How do economic, geographic, or cultural constraints impact your solution's reach and effectiveness?
- What systemic barriers might prevent certain groups from accessing or benefiting from your technology?
- Who truly owns the data collected by your technology?
- What digital infrastructure or literacy barriers prevent effective community participation?
- How do you ensure data collection and use directly benefits the communities involved?
- What strategies have you used to mitigate technological bias and center local community voices?
- How do your design choices reflect or challenge existing power structures?

How can technology and participatory approaches strengthen each other?

World café: finding solutions



Tools, organizations & recommended reading

- **RSPB Participatory approaches toolkit:** <https://www.rspb.org.uk/RSPB-Participatory-Toolkit-for-Conservation>
- **NEA Initiative practical guidelines for ILK:** <https://www.ecosystemassessments.net/content/uploads/2022/03/Practical-Guide-ILK-ENG.pdf>
- **SwedBio Multiple Evidence Base approach:** <https://swed.bio/stories/a-multiple-evidence-base-approach-for-equity-across-knowledge-systems/>
- **Community-based monitoring and information systems:** <https://cbmis.tebtebba.org/index.php/about-cbmis>
- **MappingForRights:** <https://www.mappingforrights.org/>
- **The PARTNERS Principles for Community-Based Conservation:** <https://snowleopard.org/wp-content/uploads/2021/01/THE-PARTNERS-PRINCIPLES-2016.pdf>
- **Institute of development studies:** <https://www.participatorymethods.org/>
- **Community maps:** <https://communitymaps.org.uk/welcome>
- **Sapeli:** <https://www.sapelli.org/about/>
- **Plan Vivo Participatory Toolkit:** <https://www.planvivo.org/listing/category/participatory-toolkit?Take=20>
- **Extreme Citizen Science (ExCiteS):** <https://www.ucl.ac.uk/geography/research/research-centres/extreme-citizen-science-excites>
- **ICT4D Collective:** <https://ict4d.org.uk/about-us/>
- **Tengö et al (2017):** <https://doi.org/10.1016/j.cosust.2016.12.005>

Thank you!

- Let's stay connected!
- Remember to build *with*, not *for*.



Edita Chavez-Heredia
Product Manager



Alice Gottesman
Technical Manager



Hannah Grice
Operations Manager

